

Top Stories This Week

- Defence Acquisition Council approves Defence Procurement Policy 2016. Defence Procurement Policy effective from April 1, 2016
- India-Iran deal on the Farzad-B gas fields likely in April: FE
- Navabharat Ventures enters into an agreement with Tata Power to Supply Power to Telangana discom
- Cummins lines up `1000 cr to expand R&D centre in India
- Bharti Airtel -Signs pact with American Tower Corp for sale of Tanzania Tower portfolio -To sell Tanzania Tower portfolio for USD 179 million
- NTPC commissions unit-I of 250 MW Nabinagar thermal power station
- JSPL starts 1.4 MMTPA rebar mill in Oman: BS
- Edelweiss Financial To Acquire JPMorgan's Mutual Fund Biz In India. JPMorgan AMC's MF Biz AUM Is Worth `7,081 Cr
- Honeywell: To Partner With Navin Fluorine To Produce Automobile Refrigerant.
- Texmaco Infra: Zuari Global Acquires 4.71% Shares In Co Via Inter-Se-Transfer
- IDBI Bank plans to raise Rs 20,000 crore by FY17 from bonds to fund business growth: FE

Weekly Indices Change

| Index | Close | Prev Close | Chg. (%) |
|---------|-------|------------|----------|
| SENSEX | 25337 | 24952 | 1.54 |
| NIFTY | 7716 | 7604 | 1.47 |
| MIDCAP | 10524 | 10300 | 2.17 |
| SMLCAP | 10501 | 10308 | 1.87 |
| METAL | 7643 | 7433 | 2.83 |
| OIL&GAS | 9060 | 9029 | 0.34 |
| AUTO | 17830 | 17334 | 2.86 |
| TECK | 6072 | 5991 | 1.35 |
| BANKEK | 18110 | 17851 | 1.45 |
| IT | 11297 | 11177 | 1.07 |
| FMCG | 7614 | 7582 | 0.42 |
| HC | 15449 | 15268 | 1.19 |
| PSU | 6101 | 6025 | 1.26 |
| CD | 11542 | 11273 | 2.39 |
| POWER | 1743 | 1716 | 1.57 |
| CG | 12936 | 12474 | 3.70 |
| REALTY | 1231 | 1180 | 4.32 |

Global Indices

| | | | |
|----------|-------|-------|-------|
| DOW | 17515 | 17602 | -0.49 |
| NASDAQ | 4773 | 4795 | -0.46 |
| FTSE | 6106 | 6189 | -1.34 |
| NIKKEI | 17003 | 16724 | 1.67 |
| HANGSENG | 20345 | 20671 | -1.58 |

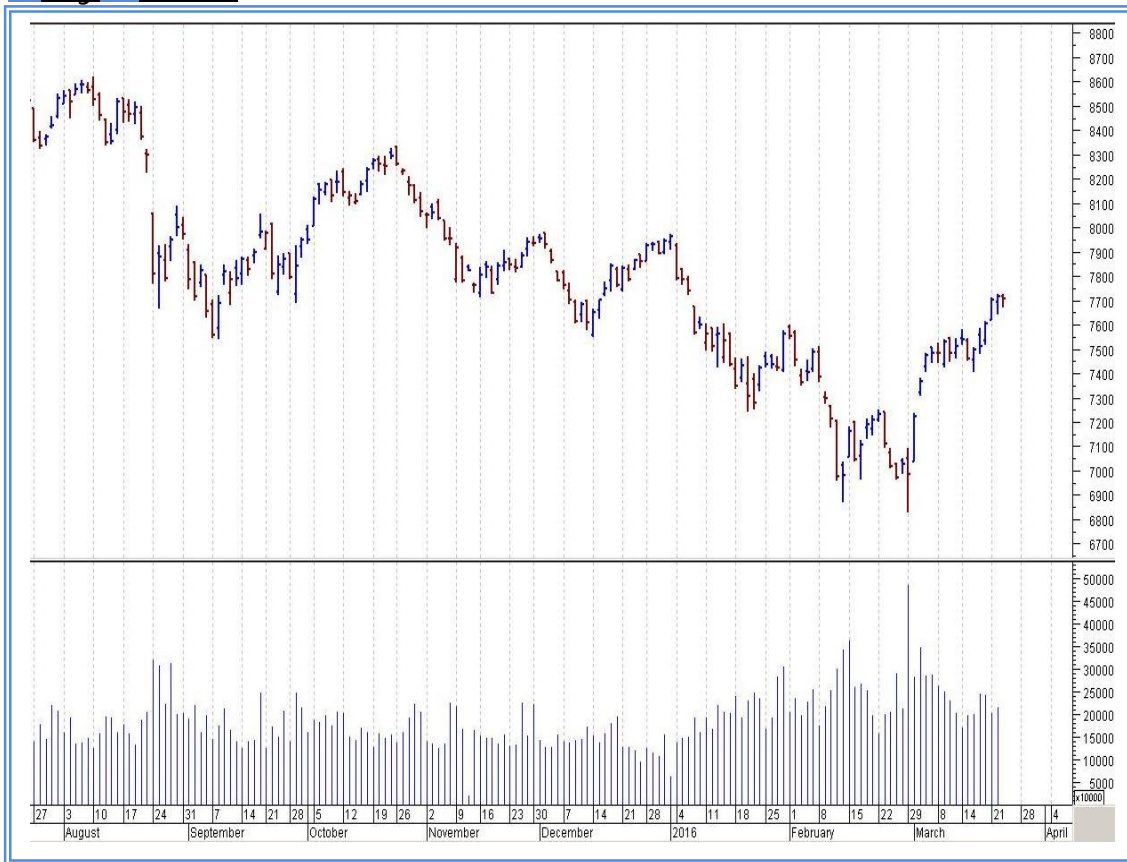
Top Gainers Weekly

| Scrip | Price | % Chg |
|--------------------|--------|-------|
| AXISCADES Engineer | 281.80 | 30.40 |
| ABG Shipyard | 71.55 | 26.53 |
| Persistent Systems | 727.05 | 21.24 |
| Vadilal Indus. | 638.65 | 19.81 |
| TRF Ltd | 301.85 | 18.86 |

Top Losers Weekly

| Scrip | Price | % Chg |
|--------------------|---------|-------|
| Rushil Decor Ltd. | 195.10 | 20.20 |
| Lupin Ltd. | 1524.15 | 18.46 |
| Global Offshore | 224.50 | 17.26 |
| Vakrangee | 193.75 | 13.23 |
| Torrent Power Ltd. | 216.70 | 12.25 |

Nifty Corner



| Support & Resistance | | | | | | |
|----------------------|------|-------|-------|--------|------|--------|
| S3 | S2 | S1 | Nifty | R1 | R2 | R3 |
| 7500 | 7550 | 7600 | 7716 | 7850 | 7900 | 7950 |
| Moving Averages | | | | | | |
| 20DMA | | 50DMA | | 100DMA | | 200DMA |
| 7385 | | 7365 | | 7605 | | 7905 |

Market Commentary

Key benchmark indices gained in a truncated trading week which ended on Wednesday, 23 March 2016 on expectations of a bigger rate cut of 50 basis points from the Reserve Bank of India (RBI) at its monetary policy review early next month. Key indices gained in all the three sessions of the week. The barometer index, the S&P BSE Sensex, rose 1.54% to settle at 25,337. The 50-unit Nifty 50 index gained 1.47% to settle at 7,716. The BSE Mid-Cap index rose 2,17%. The BSE Small-Cap index gained 1.87%. Both these indices outperformed the Sensex. For the next week Nifty likely to trade in the range between 7850 – 7900 in the upper side and 7600 – 7550 in the lower side.

Stocks at 52 wk High

| Scrip | Cmp |
|----------------|---------|
| Ashok Leyland | 106.00 |
| Dr Lal PathLab | 921.45 |
| Hero Motocorp | 2871.40 |
| JSW Steel | 1248.70 |
| Welspun India | 108.20 |

Stocks at 52 wk Low

| Scrip | Cmp |
|---------------------|--------|
| Indiabulls Ventures | 15.70 |
| Jindal Stainles | 17.40 |
| Monte Carlo | 369.95 |
| Precision Camsh | 144.70 |
| TCI Finance | 19.40 |

FII Activity

| Date | Figures in crore |
|-------|------------------|
| 21/03 | 1396.33 |
| 22/03 | 1095.44 |
| 23/03 | 976.91 |
| 24/03 | -- |
| 25/03 | -- |
| NET | 3468.68 |

DII Activity

| Date | Figures in crore |
|-------|------------------|
| 21/03 | -618.77 |
| 22/03 | -930.37 |
| 23/03 | -1022.58 |
| 24/03 | -- |
| 25/03 | -- |
| NET | -2571.72 |

Weekly Stock Idea

| Scrip | B/S | Cmp | Tgt |
|------------|-----|-----|-----|
| TVSELECT | B | 92 | 105 |
| MUNJALAUTO | B | 78 | 85 |
| BBTC | B | 383 | 415 |
| TATASTEEL | B | 317 | 335 |
| CAIRN | B | 158 | 165 |

Buy on dips & Sell on rise with Stop-loss of 3%

Volume Breakout Stocks

| Scrip | Cmp |
|----------------------|---------|
| Monsanto India | 1825.40 |
| Neyveli Lignite | 75.00 |
| Navin Fluorine | 1697.75 |
| Kalpataru Power | 216.00 |
| Hind Oil Exploration | 32.80 |

Week Ahead

MAJOR RESULTS/AGM MEETING THIS WEEK:

30 MAR: TECPRO

VISIT US AT: WWW.INDIRATRADE.COM

Disclaimer

This report is for private circulation within the Indira Group. This report is strictly confidential and for information of the selected recipient only and may not be altered in any way, transmitted to, copied or distributed, in part or in whole, to any other person or to the media or reproduced in any form. This report should not be construed as an offer or solicitation to buy or sell any securities or any interest in securities. It does not constitute a personal recommendation or take into account the particular investment objectives, financial situations, or any such factor. The information, opinions estimates and forecasts contained here have been obtained from, or are based upon, sources we believe to be reliable, but no representation of warranty, express or implied, is made by us to their accuracy or completeness. Opinions expressed are our current opinions as of the date appearing on this material only and are subject to change without notice.